

Home Theater Components 2006-2007

New Product Information



VSX-2016AV-S



A THX Select2 certified 7.1-channel A/V receiver featuring 7ch 200W power, Phase Control, Standing Wave Control, Sound Retriever, Advanced MCACC, HDMI, USB Memory Audio Ready, and iPod Control



Pioneer-Exclusive Innovations

- ◆ Phase Control
- ◆ Standing Wave Control (an MCACC function)
- ◆ Advanced MCACC (Multi-Channel Acoustic Calibration System) setup with 9-band EQ (mic included)
- Advanced Direct Energy Power Amplifier

Features for Superior Sound Quality

- ◆ Maximum power (6 ohms): 7ch 200W
- ◆ Sound Retriever
- ◆ 32-bit Digital Processing by "The 3rd-Generation SHARC® Processor" and Freescale 48-bit Processing DSP

Surround Sound Technologies

- ◆ THX Select2 certified
- THX Surround EX
- WMA9 Pro
- DTS/DTS-ES/DTS NEO:6/DTS 96/24/Dolby Digital EX/Dolby Digital/Dolby Pro Logic IIx decoder
- Advanced Surround: Action, Sci-Fi, Drama, Musical, Mono Film, 7-D Theater, Classical, Chamber, Jazz, Rock, Dance, 7ch Stereo, Advanced Virtual Surround, Phones Surround

Enhanced Convenience

- ◆ HDMI Ver.1.2
- ◆ iPod Control (iPod connection cable included)
- ◆ USB Memory Audio Ready (USB Host function)
- Digital Video Converter (up to HDMI)

*SHARC is a registered trademark of Analog Devices, Inc.



Rear Panel



Control Panel



Set-up Mic.

iPod® Control

The unit is compatible with iPod, iPod Mini, iPod nano, and iPod Photo, but compatibility may vary depending on the software incorporated in your iPod. The VSX-2016AV-S does not support software versions prior to iPod update 2004-10-20. Consult your nearest Pioneer dealer for supported versions.

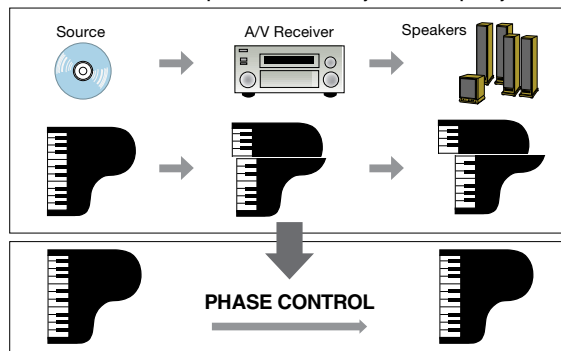
Pioneer Innovations for Optimum Speaker Setup

Phase Control — An Innovation for Multi-Channel Sound Compensation (VSX-2016AV-S, VSX-1016V-S)

When amplifying multi-channel audio signals, receivers use Low Pass Filter (LPF) for processing low-frequency signals for subwoofer output. This extra process causes "phase lag", or approximately 5 msec delay of low-frequency signals with respect to those of main channels. The delayed bass affects the quality of main-channel sound and makes the sound lack synchronization.

The latest A/V receivers incorporate Pioneer's Phase Control technologies, which apply a new bass management system to effectively compensate for the phase lag between subwoofer channel and the main channels. This significantly improves the multi-channel sound without any extra operation.

The "Phase Control" Compensates for the Delay of Low-Frequency Sound



Standing Wave Control (VSX-2016AV-S)

Acoustic standing waves occur when the sound waves coming out of your speaker system resonate with those reflecting off the walls. This can have a negative effect on the overall sound, especially in certain lower frequencies. The result is often an overly resonant and "boomy" sound, depending on the speaker positioning, your listening location, and the shape of the room. The Pioneer A/V receiver's Standing Wave Control effectively moderates resonance and also prevents the inaccurate EQ settings that can be caused by standing waves.

Create an Ideal Acoustic Environment with Ease — with Advanced MCACC (Multi-Channel Acoustic Calibration System) or Auto MCACC

The VSX-2016AV-S comes with Advanced MCACC, which allows easy setup of surround sound for creating an ideal listening environment — close to that of a professional mixing studio. Complete with a microphone, the system compensates for differences in speaker size, speaker level, and speaker distance and equalizes response — with 9-band EQ. The Advanced MCACC applies "time axis" in measuring the listening environment's acoustic characteristics and in applying frequency response compensation. This enables the system to distinguish between direct sound and room reverberation, resulting in even more precise, minute adjustment of frequency response for human ears. The system also permits "X-Curve Compensation" of frequency response — a living-room sized version of an international frequency response standard (ISO2969) used for designing movie theaters and dubbing suites.

The VSX-1016V-S, VSX-816-S, and VSX-516-S come with Auto MCACC, which compensates for differences in speaker size, speaker level, and speaker distance, and equalizes response with 5-Band EQ, all automatically.



Advanced Features for PC Music Files

iPod® Control (VSX-2016AV-S)

The Pioneer A/V receiver comes with a dedicated iPod terminal and an iPod connection cable. Connect your iPod to the unit to enjoy music files via your audio systems. You can easily control the connected player, using the A/V receiver's remote control with a menu screen displayed on your monitor — similar to directly using an iPod itself.



iPod is for legal or rightholder-authorized copying only. Don't steal music. iPod is a trademark of Apple Computer, Inc., registered in the U.S. and other countries.

USB Memory Audio Ready (USB Host Function) (VSX-2016AV-S, VSX-1016V-S, VSX-816-S)

The above receivers are ready to serve as USB Hosts. They come with a USB input terminal located on the front panel, which allows easy connection with your digital audio player or USB memory, for playing music files via your audio system.

Sound Retriever

Every Pioneer A/V receiver comes with the newly-developed Sound Retriever, which significantly improves the sound quality of compressed audio — such as WMA, MP3, and AAC — to the level of CD sound. This Pioneer-exclusive technology applies a special algorithm to restore the signals in barely audible ranges, which are eliminated during the compression process.

VSX-1016V-S



A THX Select2 certified 7.1-channel A/V receiver featuring 7ch 180W power, Phase Control, Sound Retriever, Auto MCACC, HDMI, and USB Memory Audio Ready



Pioneer-Exclusive Innovations

- ◆ Phase Control
- ◆ Auto MCACC (Multi-Channel Acoustic Calibration System) setup with 5-band EQ (mic included)
- ◆ Advanced Direct Energy Power Amplifier

Features for Superior Sound Quality

- ◆ Maximum power (6 ohms): 7ch 180W
- ◆ Sound Retriever
- ◆ Digital Core Engine with Freescale 48-bit Processing DSP

Surround Sound Technologies

- ◆ THX Select2 certified
- ◆ THX Surround EX

- WMA9 Pro
- DTS/DTS-ES/DTS NEO:6/DTS 96/24/Dolby Digital EX/Dolby Digital/Dolby Pro Logic IIx decoder
- Advanced Surround: Advanced Movie, Advanced Music, Advanced Game, 7ch Stereo, TV Surround, Sports, Expanded, Virtual Surround, Phones Surround

Enhanced Convenience

- ◆ HDMI Switching
- ◆ USB Memory Audio Ready (USB Host function)
- ◆ Digital Video Converter (up to Component)



Rear Panel Speaker terminals are the same as those of the VSX-2016AV-S.

The THX logo is a trademark of THX Ltd. and may be registered in some jurisdictions. All rights reserved.

VSX-816-S



A 7.1-channel A/V receiver with 7ch 130W high power and advanced functions including Auto MCACC with 5-Band EQ, Sound Retriever, USB Memory Audio Ready, and a wide range of surround formats and original surround modes



Rear Panel

VSX-516-S



A 6.1-channel A/V receiver with 6ch 130W high power, Auto MCACC with 5-Band EQ, Sound Retriever, WMA9 Pro, and a wide range of surround formats and original surround modes



Rear Panel

VSX-416-S



A 5.1-channel A/V receiver with 5ch 130W high power, Sound Retriever, WMA9 Pro, DTS 96/24, and a wide range of original surround modes



Rear Panel

Pioneer-Exclusive Innovations

- ◆ Auto MCACC (Multi-Channel Acoustic Calibration System) setup with 5-band EQ (mic included) (VSX-816-S, VSX-516-S)
- ◆ Quick Setup (VSX-416-S)
- ◆ Pioneer Hybrid Amplifier Design

Features for Superior Sound Quality

- ◆ Maximum power: 7ch 130W (VSX-816-S) 6ch 130W (VSX-516-S) 5ch 130W (VSX-416-S)
- ◆ Sound Retriever

- ◆ Digital Core Engine with Freescale 48-bit Processing DSP
- ◆ 192kHz/24-bit DAC

Surround Sound Technologies

- ◆ WMA9 Pro
- ◆ DTS/DTS-ES/DTS NEO:6/DTS 96/24/Dolby Digital EX/Dolby Digital/Dolby Pro Logic IIx decoder (VSX-816-S, VSX-516-S)
- ◆ DTS/DTS 96/24/Dolby Digital/Dolby Pro Logic II decoder (VSX-416-S)
- ◆ Advanced Surround: Advanced Movie, Advanced Music, Advanced Game,

- 7ch Stereo (VSX-816-S), 6ch Stereo (VSX-516-S), Extra Power (VSX-416-S), TV Surround, Sports, Expanded, Virtual Surround, Phones Surround
- ◆ Dialog Enhancement
- ◆ Auto Surround

Enhanced Convenience

- ◆ USB Memory Audio Ready (USB Host function) (VSX-816-S)
- ◆ SR+ Terminal (VSX-816-S)
- ◆ 5.1-Channel Input (DVD)
- ◆ FL Dimmer

*Dolby®, "Pro Logic" and the double-D symbol are registered trademarks of Dolby Laboratories. "DTS", "DTS-ES Extended Surround", "NEO:6", and "DTS 96/24" are trademarks of Digital Theater Systems, Inc.

HTP-2700



Audio Receiver + 5.1-Channel Speaker System

Add this package to your DVD/CD player, VCR, STB, or others to enjoy high-power multi-channel sound at ease.



SX-316-S Audio Receiver

Features for Superior Sound Quality

- ◆ Maximum power: 6ch 130W
- New Freescale 180MIPS Processing DSP
- 192kHz/24-bit DAC

Surround Sound Technologies

- ◆ WMA9 Pro
- DTS/DTS 96/24/Dolby Digital/Dolby Pro Logic II decoder
- Advanced Surround: Advanced Movie, Advanced Music, Advanced Game, Extra Power, TV Surround, Sports, Expanded, Virtual Surround, Phones Surround
- Dialog Enhancement
- Auto Surround

Enhanced Convenience

- ◆ Portable audio player ready (analog connection via front stereo mini jack)
- ◆ Sound Retriever
- ◆ FL Dimmer
- Easy-to-use remote control capable of controlling Pioneer DVD players and recorders
- Quick Setup
- FM/AM presets (30 stations)

S-FCRW2700 Speaker System

- Front/Surround speakers: 7.7cm cone, magnetically shielded
- Center speaker: 7.7cm cone, magnetically shielded
- Subwoofer: 16cm cone

- Dimensions (W x H x D)
 - Front/Surround: 105 x 115 x 114mm
 - Center: 270 x 90 x 100mm
 - Subwoofer: 190 x 360 x 317mm
- Weight
 - Front: 0.6kg (per piece)
 - Center: 0.8kg
 - Surround: 0.66kg (per piece)
 - Subwoofer: 4.2kg
- Impedance: 8 ohms



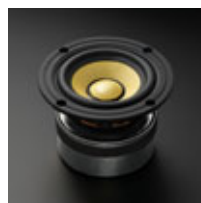
A mini-plug audio input on the front panel permits analog connection with portable audio players at ease.

S-A4SPT-PM

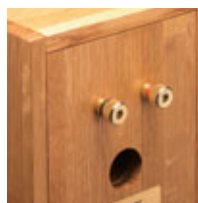
An environmentally-friendly 2-way speaker system featuring enclosures made of recycled white oak whiskey barrels



- Magnetically-shielded 2-way speaker system
- Environmentally-friendly enclosures made of recycled white oak whiskey barrels
- 10cm cone woofer
- 2cm dome tweeter
- 2.5m OFC (oxygen-free copper) speaker cable included
- Maximum power: 100W
- Frequency range: 60Hz-40kHz
- Dimensions (W x H x D): 154 x 246 x 213mm
- Weight: 3.8kg
- Impedance: 6 ohms



10cm Aramid Fiber Cone Woofer (Aramid fiber is also used for the center cap.)



High-Grade Speaker Terminals

S-EW2



Down-firing powered subwoofer featuring elegant European design and even deeper bass



- Maximum power: 85W
- Newly-developed 16cm woofer for reproducing even deeper bass
- Magnetically-shielded speaker system

S-EU8 Series



EURO Series FROM EUROPE

S-EU8TB

A sleek 4-way tall-boy front speaker system featuring European design and superior sound ensured by advanced materials and constructions

- Magnetically-shielded 4-way tall-boy speakers
- Kevlar® brand fiber cone woofers
- ABD (Acoustic Balance Driver) Technology for higher clarity with minimum standing waves inside the enclosure
- Ideal for DVD Audio and SACD playback
- Gold-plated speaker terminals with bi-amp/bi-wiring capability



S-EU8C

A stylish 3-way center speaker featuring European design and advanced materials and constructions

- Magnetically-shielded 3-way centre speaker
- Kevlar® brand fiber cone woofers
- Ideal for DVD Audio and SACD playback
- Coaxial units for remarkably precise sound image and smooth dispersion



S-EU8BS-LR

A sleek 2-way speaker system featuring sophisticated European design and highly-rigid wooden enclosures

- Magnetically-shielded 2-way speakers
- Kevlar® brand fiber cone woofers
- Ideal for DVD Audio and SACD playback
- Coaxial units for remarkably precise sound image and smooth dispersion



CP-EU8

Speaker Stands

- Designed especially for the S-EU8BS-LR speaker system



S-EU5 Series



EURO Series FROM EUROPE

S-EU5TB

A stylish 2-way tall-boy front speaker system featuring natural ambience, European design, and sleek wooden enclosures

- Magnetically-shielded 2-way tall-boy speakers
- Twin woofers placed vertically on the same axis for superior sound localization
- LDMC (Linear Drive Magnetic Circuit) technology for superior linearity
- Lightweight, high-rigidity glass-fiber cone
- Gold-plated speaker terminals with bi-amp/bi-wiring capability



S-EU5BS-LR

2-way bookshelf speaker system featuring sophisticated European design

- Magnetically-shielded 2-way speakers
- Lightweight, high-rigidity glass-fiber cone
- High-power neodymium magnet (tweeter)



S-EU5CR

2-way center/rear speaker system featuring sophisticated European design

- Magnetically-shielded 2-way centre and rear speakers
- Lightweight, high-rigidity glass-fiber cone
- High-power neodymium magnet (tweeter)
- Gold-plated speaker terminals
- Angle-adjustable stand for the center speaker included



CP-EU5

Speaker Stands

- Designed especially for the S-EU5BS-LR speaker system

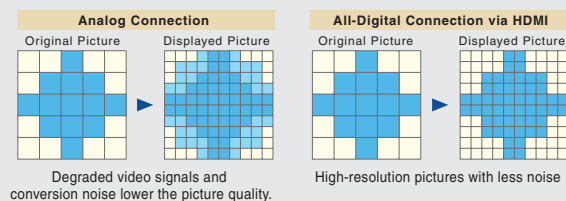


	S-EU8TB	S-EU8C	S-EU8BS-LR	S-EU5TB	S-EU5CR		S-EU5BS-LR
Speakers	Front	Center	Front/Rear	Front	Center	Rear	Front/Rear
Woofer	13cm Cone x 2	13cm Cone x 2	13cm Cone	14cm Cone x 2	10cm Cone x 2	10cm Cone	10cm Cone
Coaxial Units:	13cm Cone	13cm Cone	-	-	-	-	-
Midrange	13cm Cone	13cm Cone	-	-	-	-	-
Tweeter	2.5cm Dome	2.5cm Dome	2.5cm Dome	2.5cm Dome	2.5cm Dome	2.5cm Dome	2.5cm Dome
Super Tweeter	Riffel-type	-	-	-	-	-	-
Magnetically Shielded	*	*	*	*	*	*	*
Frequency Range	35-100,000Hz	45-50,000Hz	50-50,000Hz	40-20,000Hz	70-20,000Hz	80-20,000Hz	80-20,000Hz
Sensitivity (1m/W)	89dB	89dB	88dB	87dB	86dB	84dB	84dB
Maximum Power	130W	130W	130W	130W	130W	130W	130W
Impedance	6 ohms	6 ohms	6 ohms	8 ohms	8 ohms	8 ohms	8 ohms
Dimensions (W x H x D)	250 x 1,190 x 300mm	560 x 190 x 300mm	190 x 350 x 300mm	195 x 1,032 x 289mm	381 x 130 x 153mm	130 x 203 x 153mm	130 x 203 x 153mm
Weight (per piece)	25kg	15.6kg	7.3kg	13.4kg	3.4kg	1.9kg	1.9kg

*DuPont™ and Kevlar are trademarks and registered trade marks of DuPont or its affiliates and are under license by Pioneer

HDMI Interface (DV-696AV-S*, DV-490V-S*)

The Pioneer DVD players feature HDMI (High Definition Multimedia Interface), an industry-supported uncompressed, all-digital audio/video interface. This permits transmission of both audio and video signals with no D/A or A/D conversion, and with easy, single cable connections. Connect the DVD player with our A/V receiver and Plasma TV via HDMI, for example, and enjoy lossless, superior picture and sound quality enabled by all-digital signal processing.

**All-Digital Connection via HDMI Terminal**

*These units have been designed to be compliant with HDMI (High Definition Multimedia Interface) Version 1.1. Depending on the component you have connected, using a DVI connection may result in unreliable signal transfer.

**The DV-696AV-S and DV-490V-S allow output of Linear PCM (2-channel and 5.1-channel) and compressed audio (Dolby Digital, DTS, and MPEG).

DivX® Playback

All the new Pioneer DVD Players allow playback of DivX® files burned on a CD-R/RW/ROM disc. DivX® is a popular media technology including compressed digital video, which ensures a high compression rate and fast transfer speed without appreciably compromising the picture quality. Create a DivX® movie on your PC, burn it to a disc, and play it on the Pioneer DVD players.

What's more, the DV-696AV-S is an official DivX® Ultra Certified product**. This means the unit lets you enjoy DivX® files with interactive features like DVD Video — including menus, selectable subtitle languages/audio tracks, and so on.

*DivX, DivX Certified, and associated logos are trademarks of DivX, Inc. and are used under license.

** DivX, DivX Ultra Certified, and associated logos are trademarks of DivX, Inc. and are used under license.

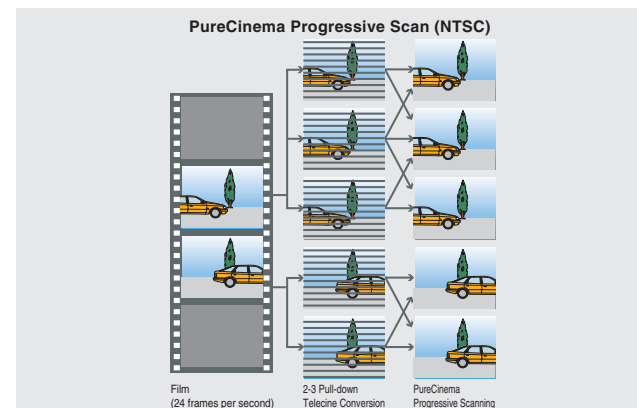
Photo + Music Mix (JPEG Slideshow with Music)

All of these new DVD players let you play back JPEG still photos and MP3/WMA music files at the same time. This means you can enjoy watching digital still photos enlarged on your TV screen while your favorite tunes play as background music — ideal for parties and more.

Dual PureCinema Progressive Scan

On DVD, movies are recorded in 24fps format. To play back film-originated sources on NTSC TV, additional frames are inserted for output in the NTSC format (30fps). Pioneer's 2-3 Pull-down PureCinema Progressive Scan Technology features highly accurate insertion and reallocation of frames for progressive scanning. The result: smooth, natural, film-like images free of bothersome artifacts like jagged edges on moving objects.

All of the new Pioneer DVD players feature PAL/NTSC dual system (with PAL-NTSC video converter offered by all the units), and allow progressive scanning with PAL sources, too. Dual PureCinema Progressive Scan, the advanced version of the Pioneer's trademark technology, enables the DVD players to provide this unique feature.



Note: To enjoy the advantages of PureCinema Progressive Scan Technology, your TV must be compatible with D2 or higher component video formats. The RCA-pin type component video output offers purer colors and finer gradations.

DVD Audio Compatible (DV-696AV-S)

The unit allows playback of DVD Audio — a standard for high-quality audio recorded on DVDs, which far exceeds CDs in capacity and sound quality. The high-spec sound from DVD Audio features frequencies up to 192kHz (2-channel) and a dynamic range of up to 144dB.

SACD/SACD Multi (DV-696AV-S)

Super Audio CD (SACD) provides fine resolution and sound quality unmatched by audio CDs, as well as multi-channel capabilities for music.

**DV-595K-S**

An advanced DVD player featuring karaoke, high-resolution pictures, JPEG Slideshow with Music, and a wide range of compatible formats — including Dual-Layer DVD-R and DivX® video

RW
COMPATIBLE

**Video Features**

- 108MHz/12-bit D/A converter
- Dual PureCinema Progressive Scan (PAL/NTSC)
- Dual-Layer DVD-R*/DVD/DVD-R/DVD-RW**/DVD+R/DVD+RW playback
- SVCD/VCD/CD/CD-R/CD-RW playback
- Official DivX® Certified product
- Plays all versions of DivX® video (including DivX® 6) with standard playback of DivX® media files
- PhotoViewer*** (JPEG Playback)
- Video Adjust function with Sharpness/Brightness/Contrast/Gamma/Hue/Chroma Level control

- Zoom function
- PAL/NTSC Dual System with PAL-NTSC video converter

Audio Features

- 96kHz/24-bit D/A converter
- WMA/MP3 playback
- Karaoke functions with 2 MIC inputs, MIC Echo, and Digital Key Control
- Sound Equalizer (Rock/Pop/Live/Dance/Techno/Classic/Soft)
- Virtual Surround

Conveniences

- Photo + Music Mix (JPEG Slideshow with Music)
- Advanced GUI
- Disc Navigator for easy browsing
- Last (Position) Memory: 5 (DVD)/1 (VCD)
- Resume function
- Screen saver
- Auto power off

DV-490V-S

An advanced DVD player featuring HDMI, Dual-Layer DVD-R playback, PAL/NTSC progressive scan, DivX® video playback, and JPEG Slideshow with Music

RW
COMPATIBLE

**Video Features**

- 108MHz/12-bit D/A converter
- Dual PureCinema Progressive Scan (PAL/NTSC)
- Dual-Layer DVD-R*/DVD/DVD-R/DVD-RW**/DVD+R/DVD+RW playback
- SVCD/VCD/CD/CD-R/CD-RW playback
- HDMI terminal for digital audio/video out
- HDMI conversion (to 720p/1080i)
- Official DivX® Certified product
- Plays all versions of DivX® video (including DivX® 6) with standard playback of DivX® media files

- PhotoViewer*** (JPEG Playback)
- Video Adjust function with Sharpness/Brightness/Contrast/Gamma/Hue/Chroma Level/BNR control
- Zoom function
- PAL/NTSC Dual System with PAL-NTSC video converter

Audio Features

- 96kHz/24-bit D/A converter
- WMA/MP3 playback
- Sound Equalizer (Rock/Pop/Live/Dance/Techno/Classic/Soft)

Conveniences

- Photo + Music Mix (JPEG Slideshow with Music)
- Advanced GUI
- Disc Navigator for easy browsing
- Last (Position) Memory: 5 (DVD)/1 (VCD)
- Resume function
- Screen saver
- Auto power off

DV-696AV-S

A high-performance DVD Audio/Video & SACD player featuring HDMI, Dual-Layer DVD-R playback, PAL/NTSC progressive scan, 5.1-channel DTS/Dolby Digital decoder, DivX® Ultra, and JPEG Slideshow with Music

RW
COMPATIBLE

**Video Features**

- 108MHz/12-bit D/A converter
- Dual PureCinema Progressive Scan (PAL/NTSC)
- DVD-Audio/Super Audio CD (SACD) playback
- Dual-Layer DVD-R*/DVD/DVD-R/DVD-RW**/DVD+R/DVD+RW playback
- SVCD/VCD/CD/CD-R/CD-RW playback
- HDMI terminal for digital audio/video out
- HDMI conversion (to 720p/1080i)
- Official DivX® Ultra Certified product
- Plays all versions of DivX® video (including DivX® 6) with enhanced playback of DivX® media files and the DivX® Media Format

- PhotoViewer*** (JPEG Playback)
- Video Adjust function with Sharpness/Brightness/Contrast/Gamma/Hue/Chroma Level/BNR control
- Zoom function
- PAL/NTSC Dual System with PAL-NTSC video converter

Audio Features

- 192kHz/24-bit D/A converter
- WMA/MP3 playback
- Built-in DTS/Dolby Digital decoder (5.1-channel audio outputs)
- Dialog Enhancer
- Virtual Surround

Conveniences

- Photo + Music Mix (JPEG Slideshow with Music)
- Advanced GUI
- Disc Navigator for easy browsing
- Last (Position) Memory: 5 (DVD)/1 (VCD)
- Resume function (except for DVD-Audio and SACD)
- Screen saver
- Auto power off

DV-393-S

A sleek DVD player featuring several compatible formats — including Dual-Layer DVD-R and DivX® video —, JPEG Slideshow with Music, and solid features for high-quality pictures and sound

RW
COMPATIBLE

**Video Features**

- 108MHz/12-bit D/A converter
- Dual PureCinema Progressive Scan (PAL/NTSC)
- Dual-Layer DVD-R*/DVD/DVD-R/DVD-RW**/DVD+R/DVD+RW playback
- SVCD/VCD/CD/CD-R/CD-RW playback
- Official DivX® Certified product
- Plays all versions of DivX® video (including DivX® 6) with standard playback of DivX® media files
- PhotoViewer*** (JPEG Playback)

- Video Adjust function with Sharpness/Brightness/Contrast/Gamma/Hue/Chroma Level/BNR control
- Zoom function
- PAL/NTSC Dual System with PAL-NTSC video converter

Audio Features

- 96kHz/24-bit D/A converter
- WMA/MP3 playback
- Sound Equalizer (Rock/Pop/Live/Dance/Techno/Classic/Soft)

Conveniences

- Photo + Music Mix (JPEG Slideshow with Music)
- Advanced GUI
- Disc Navigator for easy browsing
- Last (Position) Memory: 5 (DVD)/1 (VCD)
- Resume function
- Screen saver
- Auto power off

* Dual-Layer DVD-R (Video Mode, Video Recording Mode, CPRM) ** DVD-RW (Video Mode, Video Recording Mode, CPRM) *** CDs and Fujicolor CDs can be played back.

Regional Code: DVD players and DVD discs have Regional Code classifications that determine their market area and compatibility. Discs must have matching codes with players to ensure compatibility in playback.
CD-R/RW and DVD-R/RW Playback: Discs may not be played back for the following reason(s): recording characteristics of recorders; characteristics of discs; scratches and dust on discs; dust and condensation on pickup lenses.
CD-R/RW Playback: CD-R/RW-for-audio discs recorded in CD Audio Format, Video CD, WMA/MP3 file, or JPEG file can be played back.
DVD-R/RW Playback: DVD-R/RW-for-video discs recorded in Video Mode or VR Mode (DVD-RW only) can be played back. Unfinalized discs, however, cannot.

Most Pioneer DVD products, including DVD players/recorders for home use, play the DVD-content side of most DualDiscs. Please use a Pioneer DVD Audio player to play DVD-Audio content on DualDisc. Please note that insertion or ejection of a DualDisc into/from Pioneer's DVD products is likely to cause scratches to the disc surface. Scratched discs may not play in DVD products. A DualDisc may get stuck in and its removal may be impossible with some Pioneer products. For slot-in type home 3, 5 or 300 multi DVD changer systems, there is a possibility of mechanical jam. The non-DVD side of a DualDisc is not compliant with the Compact Disc Digital Audio Specification. Accordingly, the non-DVD side of a DualDisc may not play in Pioneer products.

CD-R/RW and DVD-R/RW software disc boxes also provide additional information on compatibility.

DVD is a trademark of DVD Format/Logo Licensing Corporation.

FEATURE COMPARISON & SPECIFICATIONS: A/V RECEIVERS

	VSX-2016AV-S	VSX-1016V-S	VSX-816-S	VSX-516-S	VSX-416-S	SX-316-S (HTP-2700)
Power Output						
Maximum Power (8 ohms) (1kHz*, 10% THD, RMS, Per Channel)	7ch 200W (6 ohms)	7ch 180W (6 ohms)	7ch 130W	6ch 130W	5ch 130W	6ch 130W
Stereo (DIN) (1kHz, 8 ohms)	150W + 150W (6 ohms)	150W + 150W (6 ohms)	100W + 100W	100W + 100W	100W + 100W	100W + 100W
Surround						
Front (1kHz, 8 ohms, 1.0% THD)	150W + 150W (6 ohms)	150W + 150W (6 ohms)	100W/Channel	100W/Channel	100W/Channel	100W/Channel
Center (1kHz, 8 ohms, 1.0% THD)	150W (6 ohms)	150W (6 ohms)	100W	100W	100W	100W
Surround (1kHz, 8 ohms, 1.0% THD)	150W + 150W (6 ohms)	150W + 150W (6 ohms)	100W/Channel	100W/Channel	100W/Channel	100W/Channel
Surround Back (1kHz, 8 ohms, 1.0% THD)	150W + 150W (6 ohms)	150W + 150W (6 ohms)	100W/Channel	100W		
Subwoofer (100Hz, 8 ohms, 1.0% THD)						100W
Total Harmonic Distortion (8 ohms)	0.09% (20-20,000Hz) 110W + 110W	0.09% (20-20,000Hz) 100W + 100W	0.09% at 1kHz 90W + 90W	0.09% at 1kHz 90W + 90W	0.09% at 1kHz 90W + 90W	0.09% at 1kHz 90W + 90W
Pioneer Original Surround Setting						
Phase Control	•	•				
Standing Wave Control	•	•				
MCACC	Advanced	Auto	Auto	Auto		
MCACC MEMORY	6 (Full Type)					
Auto & Manual EQ	9-Band	5-Band	5-Band	5-Band		
Quick Setup					•	•
Listening Modes						
Dolby Digital	•	•	•	•	•	•
Dolby Digital EX	•	•	•	•		
THX	THX Select2	THX Select2				
DTS	•	•	•	•	•	•
DTS-ES	•	•	•	•		
NEO:6 (Cinema/Music)	•	•	•	•		
DTS 96/24	•	•	•	•	•	•
Dolby Pro Logic	•	•	•	•	•	•
Dolby Pro Logic II	IIx	IIx	IIx	IIx	•	•
WMA9 Pro	•	•	•	•	•	•
Audio Features						
DSP	The 3rd-Generation SHARC® Processor + Freescale	Freescale	Freescale	Freescale	Freescale	Freescale
192kHz/24-bit D/A Converter	•	•	•	•	•	•
Audio Scaler (High-bit Proc and Legato Link)	•					
Advanced Direct Energy Amplification	•	•				
Pioneer Hybrid Amplification			•	•	•	•
Dialog Enhancement	•	•	•	•	•	•
Conveniences						
iPod® Control	•					
USB Memory Audio Ready (USB Host)	•	•	•	•	•	•
Sound Retriever	•	•	•	•		
Remote Control	LCD Learning	LCD Learning	LCD Preset	Preset	SR	SR
Digital Video Converter	• (Up to HDMI)	• (Up to Component)				
Tuner						
Random Preset Stations	30	30	30	30	30	30
3-Speed Accelerated Tuning	•	•	•	•	•	•
Miscellaneous						
Power Requirements	110/120-127/220/240V 50Hz/60Hz	110/120-127/220/240V 50Hz/60Hz	110/120-127/220/240V 50Hz/60Hz	110/120-127/220/240V 50Hz/60Hz	110/120-127/220/240V 50Hz/60Hz	110/120-127/220/240V 50Hz/60Hz
Power Consumption	450W	450W	360W	320W	280W	320W
Power Consumption during Standby Mode	0.65W	0.5W	0.5W	0.5W	0.5W	0.5W
Dimensions (W x H x D)	420 x 173 x 466mm	420 x 173 x 466mm	420 x 158 x 352.5mm	420 x 158 x 352.5mm	420 x 158 x 348mm	420 x 158 x 348mm
Weight	15.3kg	15.0kg	9.0kg	8.5kg	8.4kg	8.4kg

* 100Hz for the Subwoofer (SX-316-S)


INPUT/OUTPUT TERMINALS

	HDMI		iPod	USB Audio	Digital Optical in*	Digital Optical out	Digital Coaxial in*	Multi-ch in	Component Video in*	S-Video		Audio/Video		Audio		Monitor Video Output			Preout	
	in	out								in	out	in	out	in [†]	out	Component	S-Video	Composite		
VSX-2016AV-S	2	1	1	1	4**	1	2	7.1ch	3	5**	2	5**	2	3	1	1	1	1	1	7.1ch
VSX-1016V-S	2	1	1	1	4**	1	2	7.1ch	3	5**	2	5**	2	3	1	1	1	1	1	7.1ch
VSX-816-S	-	-	-	1	3**	1	2	5.1ch (DVD)	3	4**	1	4**	1	4	1	1	1	1	1	7.1ch
VSX-516-S	-	-	-	-	1	-	2	5.1ch (DVD)	-	-	-	3	1	3	1	-	-	-	1	SW
VSX-416-S	-	-	-	-	1	-	2	5.1ch (DVD)	-	-	-	3	1	3	1	-	-	-	1	SW
SX-316-S	-	-	-	-	1	-	2	-	-	-	-	-	-	4	1	-	-	-	-	-

* Assignable (except SX-316-S); ** One on Front Included; † Tuner Included

SPECIFICATIONS: DVD PLAYERS

DVD Players	DV-696AV-S	DV-595K-S	DV-490V-S	DV-393-S
Power Requirements	110-127V/220-240V 50/60Hz	110-127V/220-240V 50/60Hz	110-127V/220-240V 50/60Hz	110-127V/220-240V 50/60Hz
Power Consumption	8.0W	7.0W	7.0W	7.0W
Power Consumption during Standby Mode	0.8W	0.8W	0.7W	0.7W
Dimensions (W x H x D)	420 x 49.5 x 225.5mm	420 x 49.5 x 225.5mm	420 x 49.5 x 225.5mm	420 x 49.5 x 214.9mm
Weight	1.7kg	1.7kg	1.7kg	1.7kg



Pioneer's EcoSave-labeled products are designed in compliance with its environmental standards.

I. Compulsory Items (Products meet all of these requirements)

- To facilitate recycling, the materials used in resin components of more than 20 grammes are displayed in accordance with ISO standards.
- As designated brominated flame retardants are suspected of releasing dioxins during incineration, they are not used.
- Ozone-depleting substances, such as CFCs and HCFCs, are not used in Pioneer's products or manufacturing processes.
- All batteries are located in such a way that they can be easily removed.
- Use of packing materials has been reduced more than 20% from fiscal 1990 levels.

II. Optional Items (Products meet the requirements of at least one of the items)

- Standby power consumption is less than 0.5W.
- Resinous packing materials, such as styrene foam, are not used.
- Recycled materials are widely used in the product.
- Lead-free solder is used.



PIONEER CORPORATION
4-1, Meguro 1-chome, Meguro-ku, Tokyo 153-8654, Japan.
http://www.pioneer.co.jp

PIONEER ELECTRONICS ASIACENTRE PTE. LTD.
(Co. Reg. No.: 199203130M)
253 Alexandra Road, #04-01, Singapore 159936
http://www.pioneer.com.sg
Service Hotline: +65-6472-7555

PIONEER (HK) LIMITED
Suites 901-6, 9/F., World Commerce Centre, Harbour City,
11 Canton Road, Tsim Sha Tsui, Kowloon, Hong Kong.
http://www.pioneerhongkong.com.hk

Published by Pioneer Corporation.
Copyright © 2006 Pioneer Corporation.
All rights reserved.
Note: Specifications and design subject to change without notice.
Printed on Recycled Paper.



For more information, call or write to: